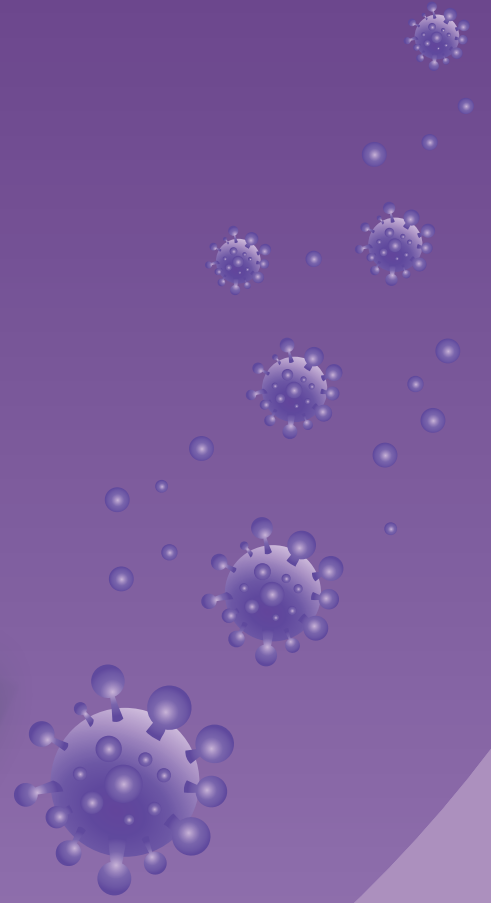
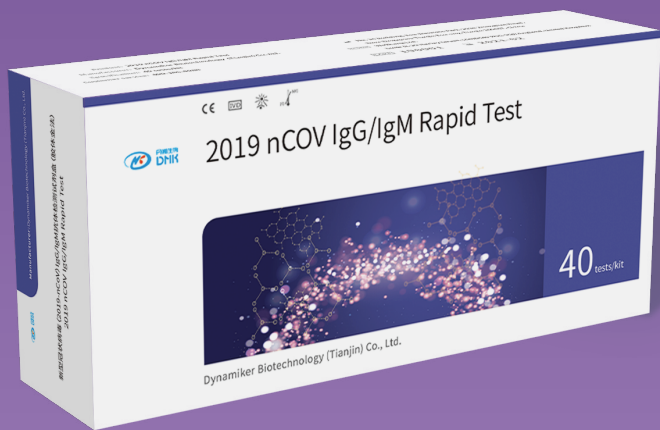




Catalogue No. DNK-1419-1

Co-developed with Institute of Medical Biology,
Chinese Academy of Medical Sciences



2019-nCoV IgG/IgM Rapid Test (LFA)

- **Sample:**

WB/S/P

- **Combo:**

IgG/IgM two in one

- **Rapid:**

TAT: 10mins

- **Clinical validation:**

Accuracy: >92%

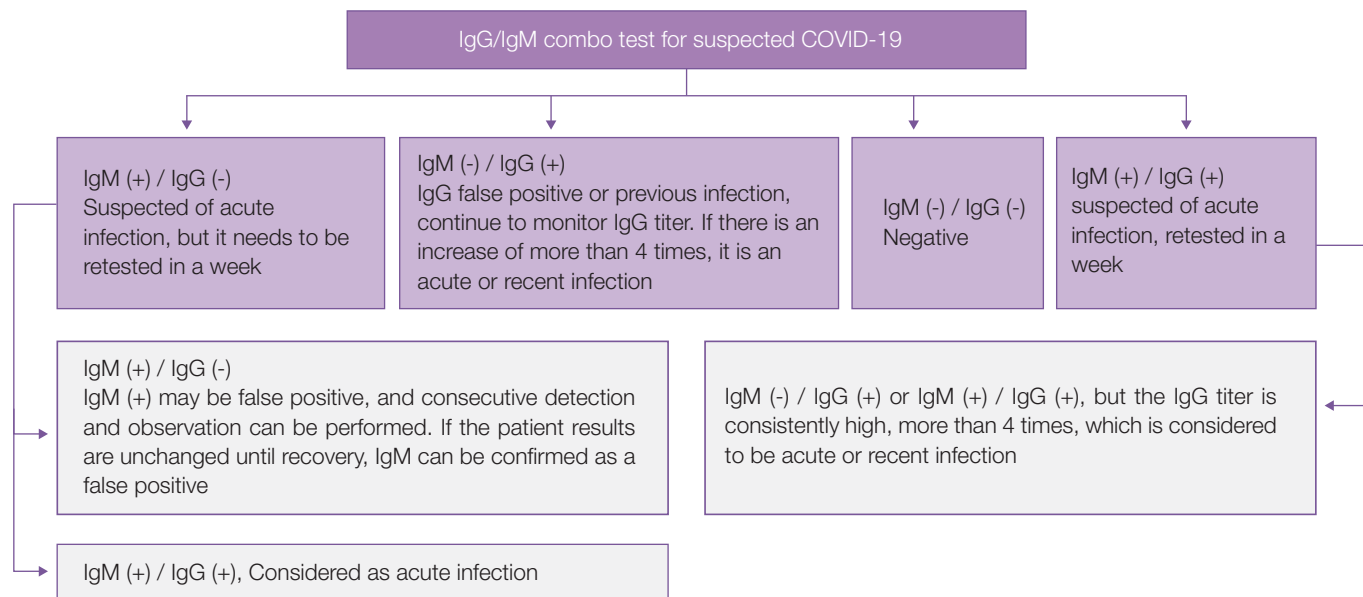
1 Order information

Cat. No.	Product	Format	Time to report	Sample	Pack
DNK-1419-1	2019-nCoV IgG/IgM Rapid Test	Cassette	10mins	Whole blood/ Serum/ Plasma	40 TESTS/KIT

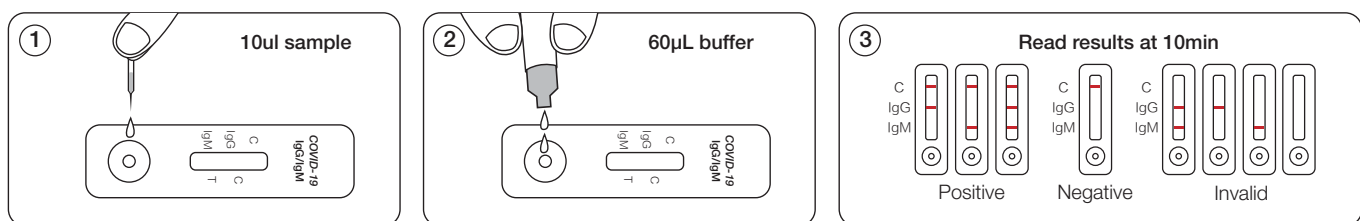
2 Clinical value of IgG/IgM detection for COVID-19

According to the "Diagnostic and treatment protocol of COVID-19 (7th Version)", the 2019-nCoV IgG/IgM antibody test is one of the proven diagnostic criteria, to assist the diagnostic of COVID-19. This is a big improvement and supplement of PCR assay.

Normally IgM appears at early stage of infection and IgG shows later with an increased titer and could exist in blood for a long time. Regarding how to combine 2019-nCoV IgG/IgM test, the National Center for Clinical Laboratories provides authentic interpretation. See Table 1.



3 Easy operation (Fingertip blood available)



Dynamiker Biotechnology (Tianjin) Co., Ltd.

Add: NO.14 Building, Eco-Business Park, 2018 Zhongtian Road, Sino-Singapore Tianjin Eco-City, Tianjin 300467, China

Tel: + 86-22-25264212

E-mail: marketing@dynamiker.com

Web: www.dynamiker.com