



What is the **Risk**
of your Patient?



Stable Reflection of Inflammation and Immune System Activation

What is suPAR and what is suPARnostic®?

suPAR (soluble urokinase plasminogen activator receptor) is a blood protein found in the blood and other bodily fluids. **suPAR** is the soluble form of the urokinase receptor (uPAR). **uPAR** is anchored to mainly white blood cells. **uPAR** is cleaved off from these cells as a result of inflammation and immune system activity and becomes soluble uPAR or suPAR. The more immune activity the higher the concentration of **suPAR**. The molecule's high stability and uniform kinetics make **suPAR** a highly reliable clinical biomarker which thorough research has proven useful in several applications.

suPARnostic® is a CE marked clinical product solution delivering accurately and precisely the level of **suPAR**.

Risk Status Marker

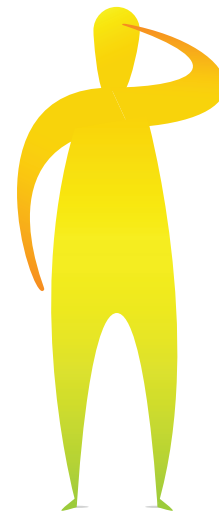


1. Health Status

suPARnostic® helps in the determination of health status of assumed healthy individuals – moderately increased long term **suPAR** levels indicate increased risk of certain life style diseases.

References:

- Haugaard, S B et al; Diabetic Medicine 2011 (Diabetes)
- Langkilde, Anne et al; Cancer Epidemiol Biomarkers Prev 2011 (Risk Marker)
- Eugen-Olsen, Jesper et al; J Intern Med 2010 (Disease Prediction in General Population)



2. Acute Triaging

suPARnostic® helps in identifying potentially critical cases early and deciding how to stratify patients - a high **suPAR** level is indicative of a critical patient condition and increased risk of mortality whereas low **suPAR** level suggests that patients may be admitted to General Ward or dismissed.

References:

- Donadello, K et al; BMC Journal 2012 (Prognostic Sepsis Marker)
- Huttunen, R et al; J Intern Med 2011 (Prediction of Disease Severity)
- Zimmermann, H W et al; Liver International 2011 (Chronic Liver Disease)

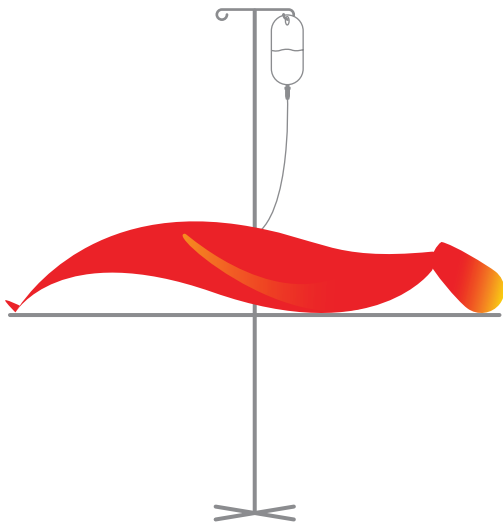
Why measure suPAR?

suPAR is used as a marker for health status of healthy individuals and as a risk status indicator in patient screening and treatment applications. **suPARnostic®** provides important clinical information for aiding in distinguishing between healthy individuals, persons who are in the early stages of developing lifestyle diseases and patients who have an urgent need for treatment due to a life threatening condition.

A moderately elevated **suPAR** level indicates increased long term risk for the person; significantly increased **suPAR** levels indicate high risk of disease progression.

suPARnostic®: Certainty in Health and Risk Management Decision Making

suPARnostic® improves the way healthy persons and critically ill patients are managed - a low suPAR level helps avoid time and resources spent on further investigation, an elevated suPAR level is a indication of developing disease.



3. Effective Treatment

suPARnostic® makes it easy to monitor treatment response - a decreasing **suPAR** level indicates patient improvement and effective intervention.

References:

- Koch, A et al; Crit Care 2011 (Treatment in Intensive Care)
- Perch, M et al; Parasite Immunol. 2004 (Parasitemia)



4. Discharge support

suPARnostic® supports the patient discharging decisions improving patient outcome and hospital economic efficiency.

References:

- Wei, C et al; Nat Med 2011 (Cause of Glomerulosclerosis)
- Rabna, P et al; Inflammation 2010 (Post-Consultation Mortality Risk)
- Rabna, P et al; Trop Med Int Health 2009 (Prediction TB Negative)

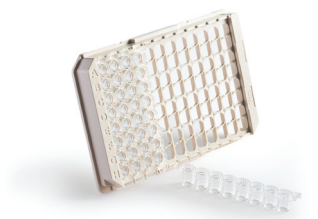
Benefits of suPARnostic® Routine Use

1. Consistency – monoclonal antibodies based assay providing precise and reproducible results for consistent patient tracking
2. Resource optimization - improved patient outcome
3. Efficiency - minimal steps for preparation and optimal performance



suPARnostic® Standard ELISA Assay (Product No. A001)

- For clinical research use and large sample quantity health screens
- 41 samples in doublets in one procedure
- 5-point-standard curve for high accuracy
- Ready-to-use reagents & software tool for results



suPARnostic® Flex ELISA Assay (Product No. A002)

- For daily clinical use and low sample quantity health screens
- Completely modular - 24 x 1, 12 x 5 or 93 samples
- Quantitative results in less than 2 hours
- Ready-to-use reagents & software tool for results



suPARnostic® Quick Lateral Flow Test (Product No. A003)

- For quick patient triaging and health assessment
- Affordable & convenient Point of Care testing
- Semi qualitative results in a few minutes
- Ready-to-use buffer solution & software tool for results



suPARnostic® Quick Test Reader (Product No. A004)

- For fast reading of suPARnostic® Quick Test
- Precise results based on proven optical technology
- Portable with USB connectivity and easy data transfer to PC

suPARnostic® assays are applied for the quantitative and semi-quantitative determination of soluble urokinase Plasminogen Activator Receptor (**suPAR**) in human EDTA plasma. suPARnostic® is the first method to assign a reproducible clinical value to the **suPAR** parameter.

The suPARnostic® ELISA kit is a simplified double monoclonal antibody sandwich assay. Recombinant **suPAR** standards in the kit are calibrated against healthy human blood donor samples.

The suPARnostic® Quick Test is based on the lateral flow principle and consists of a nitro cellulose membrane with two immobilized antibody zones and a running buffer with gold particles. The semi qualitative results are read with the Quick Test Reader – as an indication of value above or below a cut-off of 5,5 ng/ml - can be read in a few minutes.

Join the suPAR discussion on: www.Linkedin.com – ‘suPARnostic’ Group

For more information or support, please contact ViroGates or your local ViroGates distributor.

viroGates

Blokken 45 • DK-3460 Birkerød • Denmark
www.virogates.com • www.suparnostic.com
mail: : info@virogates.com

Local distributor